

Cable Duct Support

PGSD010

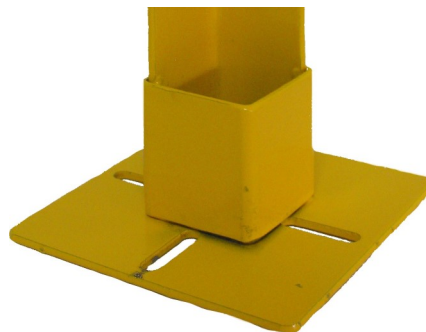
The particular **cable duct support** allows the **immediate direct anchoring of the cable duct to the upright (Basic or Strong)** without special brackets. The system offers:

- fast insert into the upright.
- anchoring the cable duct with screws for standard brackets - supplied with the ducts.



Sectors

Distribution & Warehousing
Energy
Manufacturing
OEM
Packaging



Product Data

Compatible with	Basic and Strong series
Fixings	M8
Finish	Powder Coated RAL 1021 (yellow)

