

Series BASIC

Modular Protection Systems

POST
mm




40

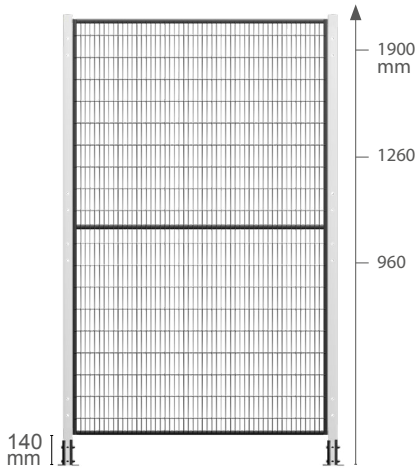
FRAME
mm

20

Protection Height: 1120 ~ 2060 mm

BASIC is the protection and accident prevention system consisting of 40x40 uprights and 20x20 panels. It is the standard method used in all guards for plant and machinery. It is easy to be assembled with a patented clamp or with nuts and bolts as an option.

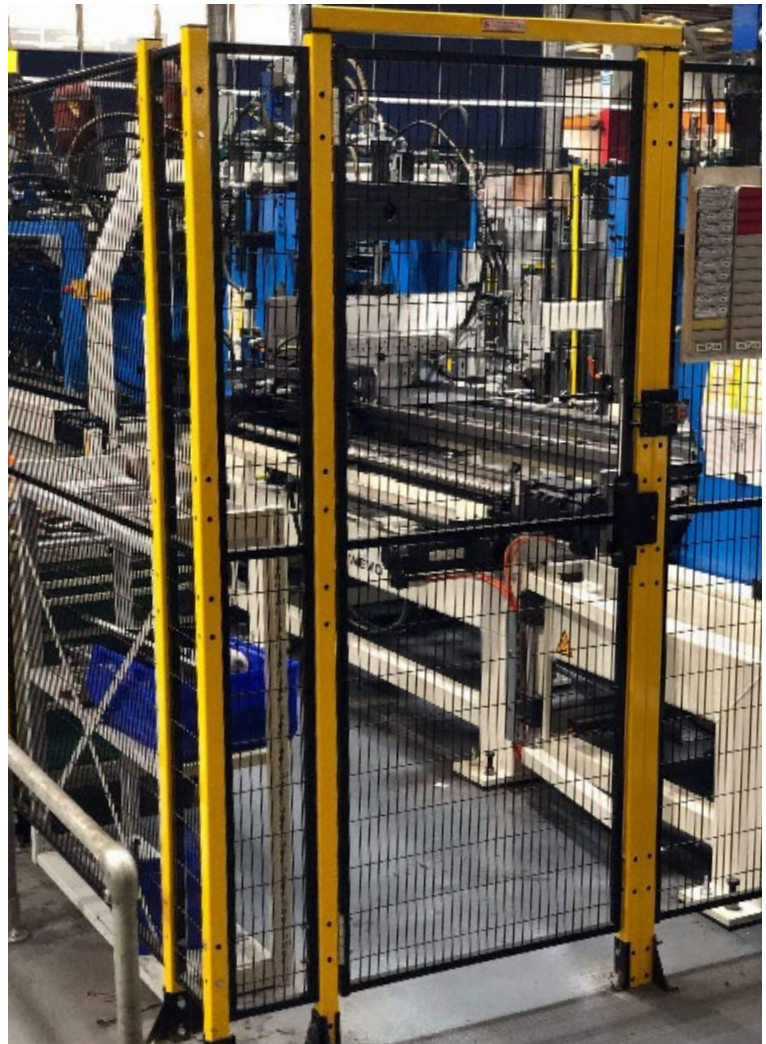
 RAL 9005  RAL 1021  SPECIAL COLOURS



Fastenings



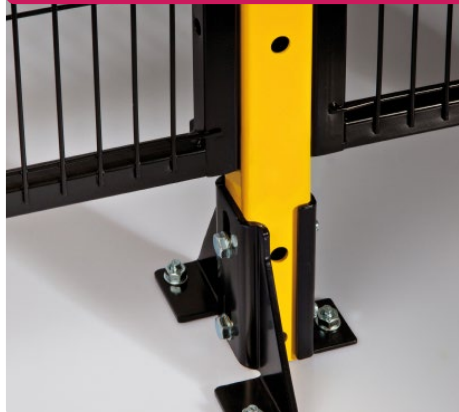
NUTS
AND BOLTS



Solid



Practical



Versatile

